



# City of Chiloquin

INCORPORATED 1926

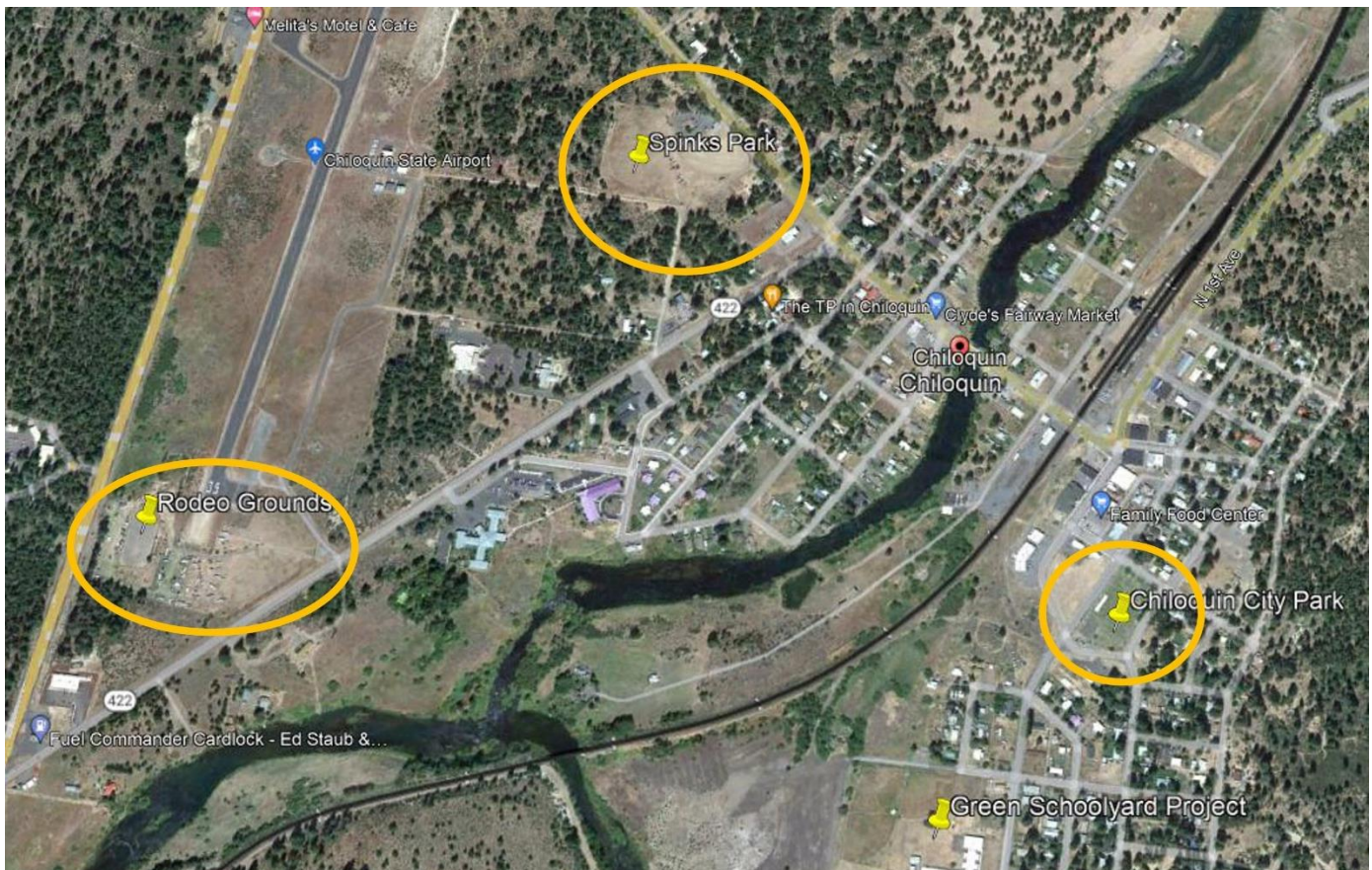
P.O. Box 196, Chiloquin, OR 97624 (541)

783-2717 • Fax (541) 783-2035

## Inventory of Parks and Recreational Spaces

### City Parks and Recreational Spaces

The city of Chiloquin has two city parks, and a rodeo event grounds for use as recreational spaces.



### Chiloquin City Park

The Chiloquin City Park is a 2.5-acre day-use park located near the downtown area and within a mile from the Chiloquin Elementary and Jr/Sr High Schools. It currently has some kids play equipment, an outdoor non-covered basketball court, and a small skate park. There is a restroom facility near the basketball court. In 2023, the city has plans to install a 4-foot-high fence around the park to increase safety for the children playing and to prevent dogs from entering the park. There are no covered areas at this park.





## Spinks Park

Spinks Park is a 12-acre day-use park where the city's baseball/softball fields are located. A new bike park funded by a local business is currently in the process of being planned out for this area. This park does not have any restroom facilities. There are no covered areas at this park.



The City of Chiloquin is an Affirmative Action/Equal Opportunity Employer and complies with Section 504 of the Rehabilitation Act of 1973 and does not discriminate because of race, color, religion, sex (including pregnancy), national origin, age (40 or older), disability, or genetic information.



## Rodeo and Events Ground

The Chiloquin Rodeo Event Grounds is 9.5 acres and is used for rodeos and other large events. This recreational space includes a rodeo arena with bleachers, a concession stand, and over a dozen picnic tables. During the summertime, The Klamath Tribes uses it for Friday Movie Night, a free event for the whole community. In 2022, a new annual event, the Chi-Town Family Festival was held here.



The City of Chiloquin is an Affirmative Action/Equal Opportunity Employer and complies with Section 504 of the Rehabilitation Act of 1973 and does not discriminate because of race, color, religion, sex (including pregnancy), national origin, age (40 or older), disability, or genetic information.



## Additional Recreational Locations

### Chiloquin Elementary School Green Schoolyard

In 2022 the Green Schoolyard project was completed at the Chiloquin Elementary School which includes an accessible walking path through native meadow habitat that's open to the community 24/7, interpretive signage in English and Klamath languages, a pole barn with basketball court, nature-based play equipment (including accessible equipment so the space is inclusive for kids with disabilities), outdoor classroom space, and raised garden beds.





## Old Mill Site

This 32-acre site currently owned by Klamath County is located at the west end of Blockinger Street and is bordered by the Sprague River, Chiloquin Elementary School, homes, and a railroad.

Klamath County, The Klamath Tribes, the City of Chiloquin, and community groups have worked together to create a vision for the future use of the site that includes the creation of green space and recreational areas.



## Old Gym

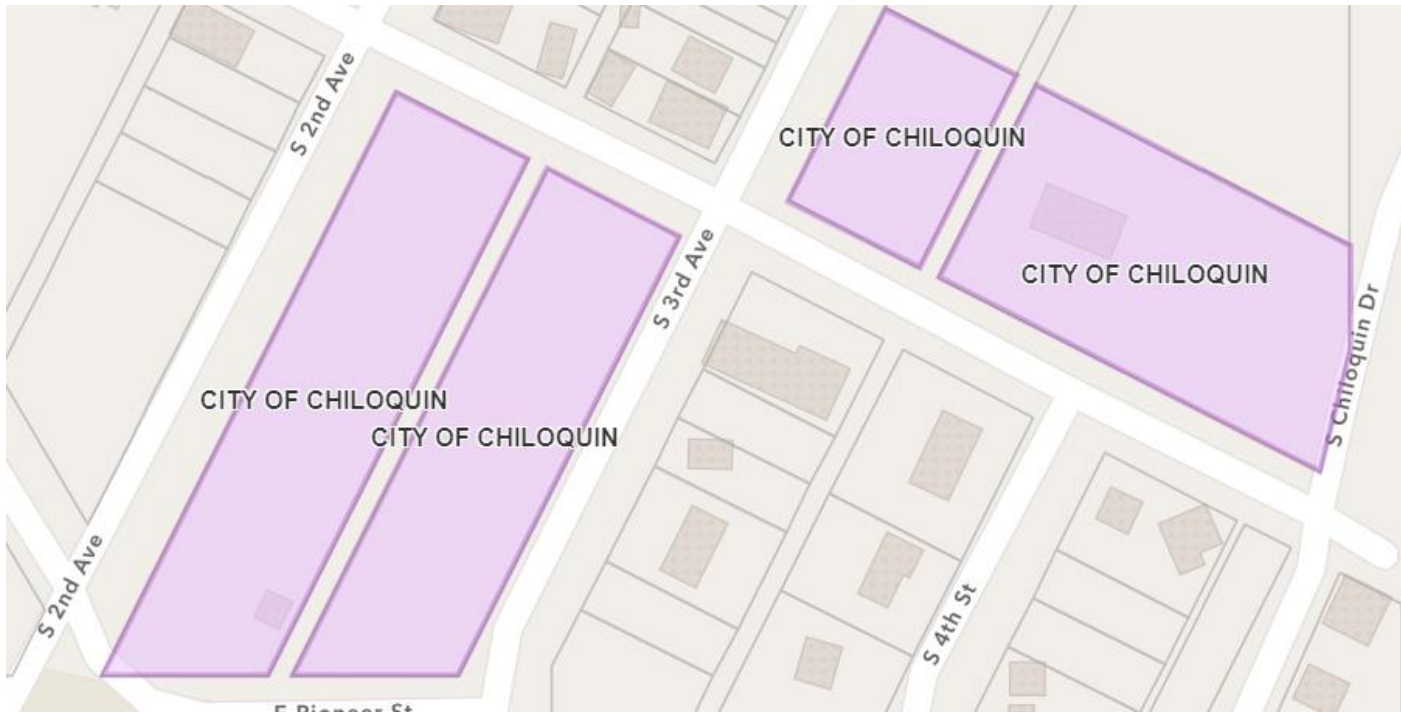
Need information inserted here



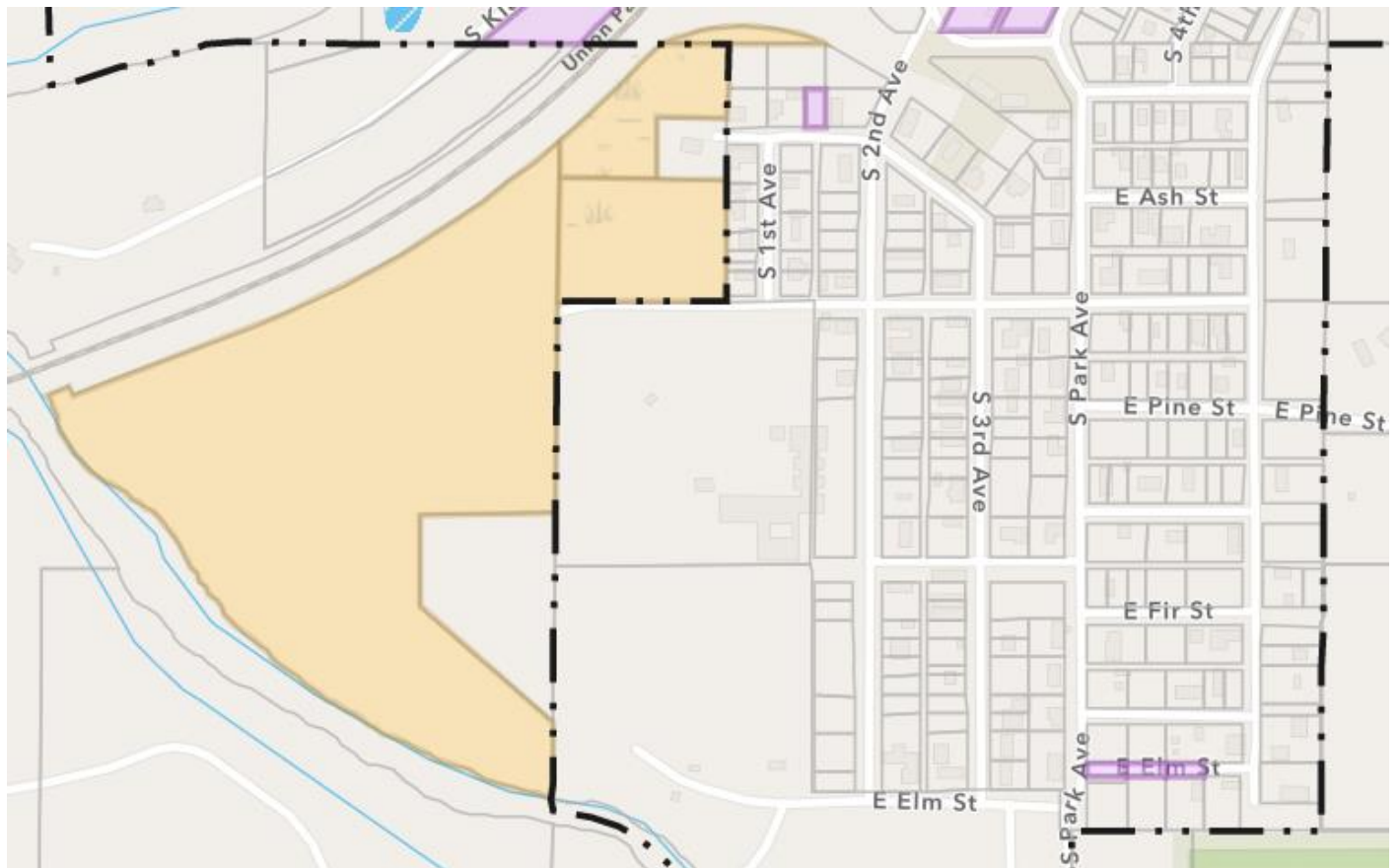
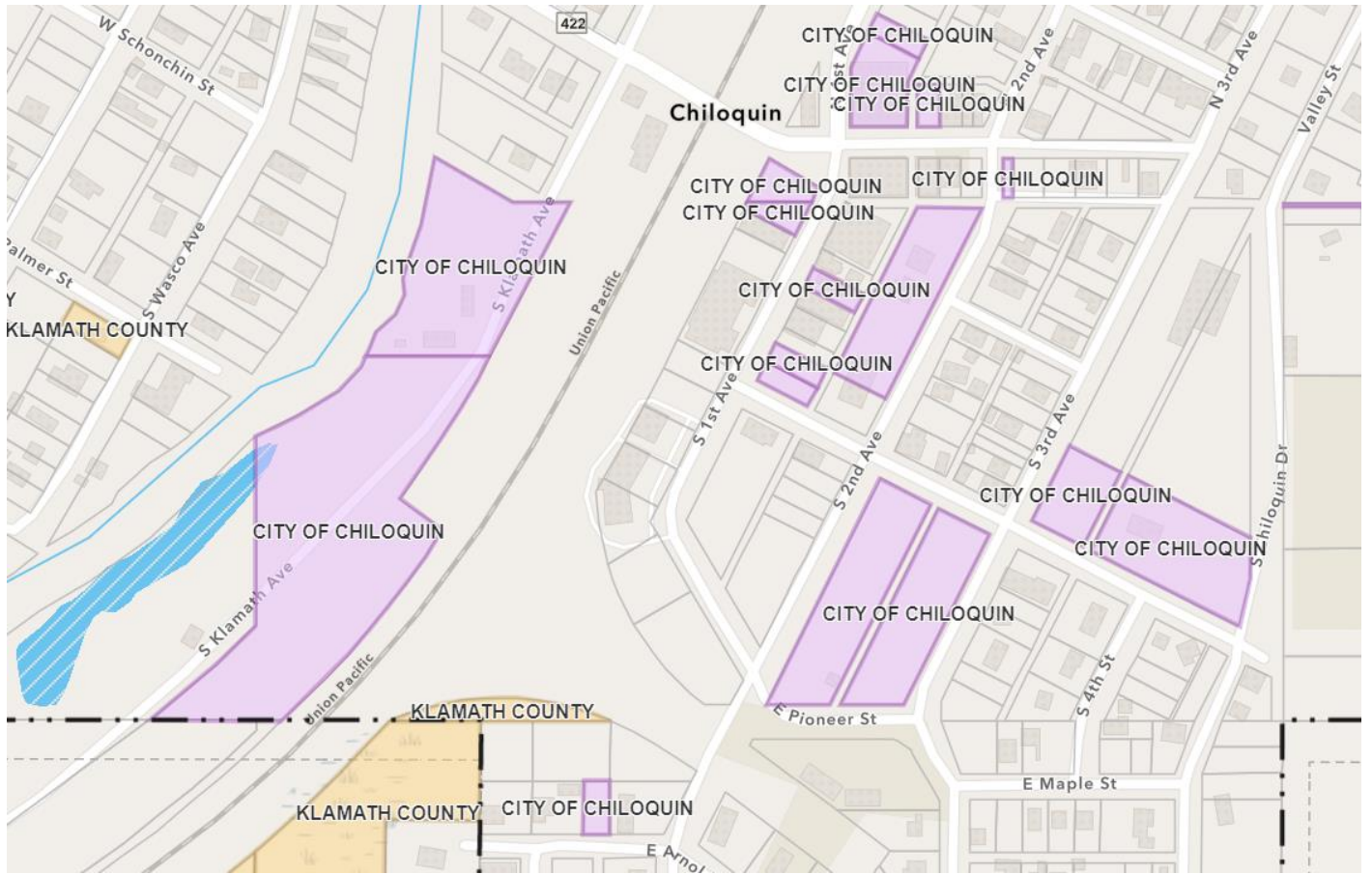
The City of Chiloquin is an Affirmative Action/Equal Opportunity Employer and complies with Section 504 of the Rehabilitation Act of 1973 and does not discriminate because of race, color, religion, sex (including pregnancy), national origin, age (40 or older), disability, or genetic information.

## Potential City Properties for Recreational Spaces

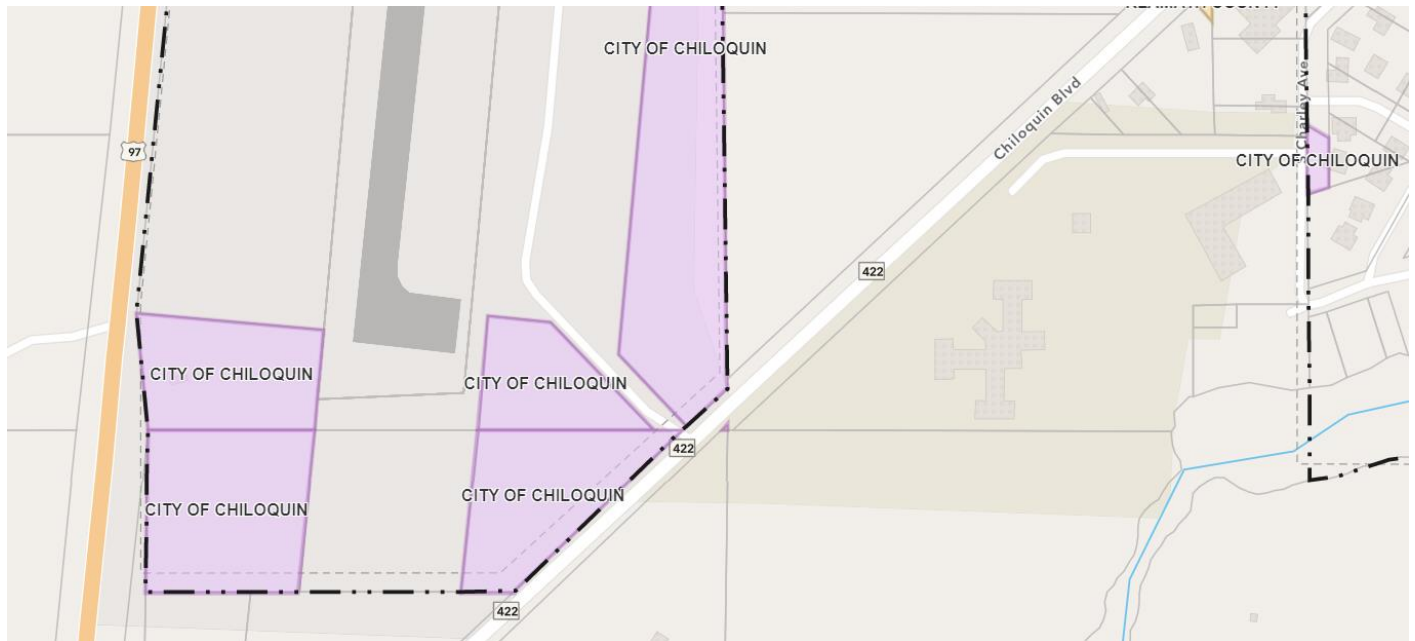
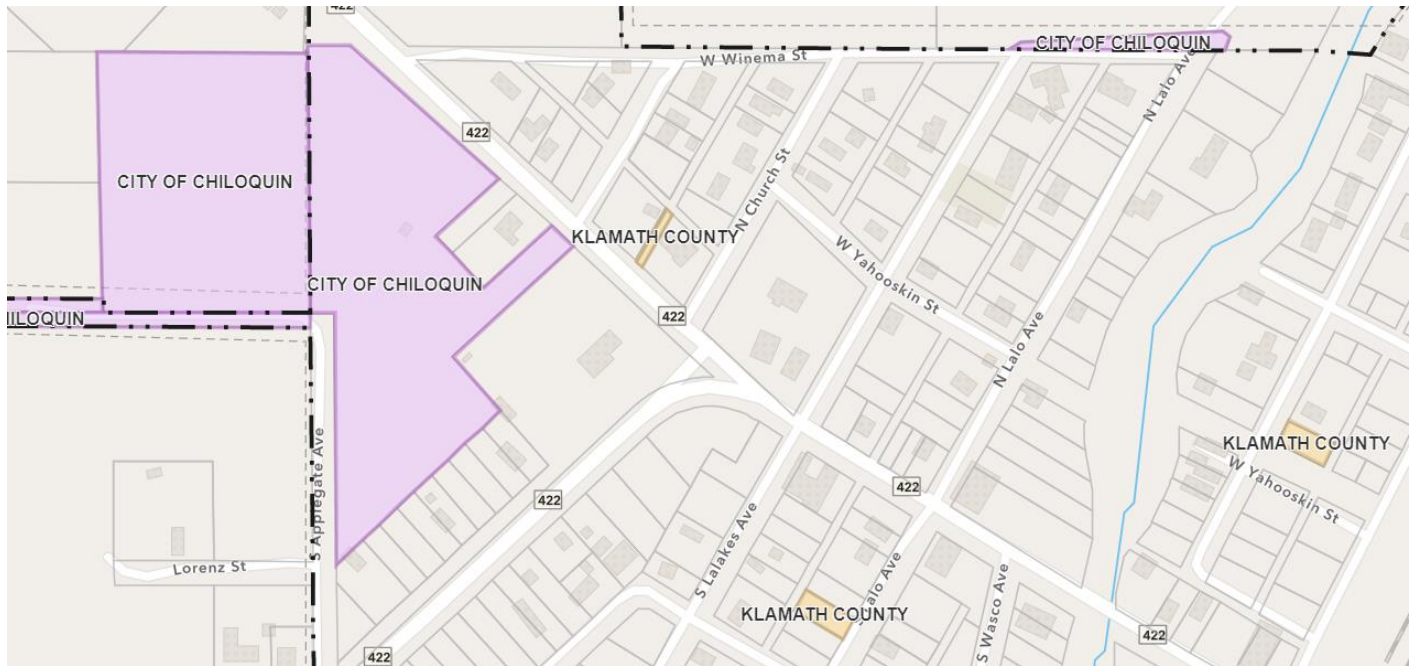
- City Parking Lot – Corner of Chocktoot St and 1<sup>st</sup> Ave. This location is used during the summer for the farmers market and will be the location of a new pocket park that is currently being planned.
- Lot at the corner of S 3<sup>rd</sup> Ave and E Schonchin St. This lot is across from the main city park and next to the Big Gym.







The City of Chiloquin is an Affirmative Action/Equal Opportunity Employer and complies with Section 504 of the Rehabilitation Act of 1973 and does not discriminate because of race, color, religion, sex (including pregnancy), national origin, age (40 or older), disability, or genetic information.



The City of Chiloquin is an Affirmative Action/Equal Opportunity Employer and complies with Section 504 of the Rehabilitation Act of 1973 and does not discriminate because of race, color, religion, sex (including pregnancy), national origin, age (40 or older), disability, or genetic information.